

### *Urban and Community Forestry*

Although at least nine states currently use GIS for urban forestry applications, only a few have done so extensively. However, some urban forestry applications occur within the context of Forest Health and Land Cover applications. All nine SFOs use GIS, while five use some form of RS, the majority of which is digital orthophotos.



The Texas Forest Service is using advanced RS technologies for urban forestry. For example, LIDAR data and digital orthophoto color infrared images are being used to develop a high-resolution dataset. TFS is conducting this work in a pilot region of Houston, TX. It will help determine land cover, vegetation, and the heights of buildings. This dataset will be merged with field data to develop a detailed forest classification dataset for use with GIS in urban areas, including digital cover maps.



The USFS has an urban forestry pilot program at the Division of Forestry for forest health and inventory monitoring. This program utilizes LANDSAT 7 data and is unique in that it is evaluating field plots in urban areas, rather than traditional forested areas.



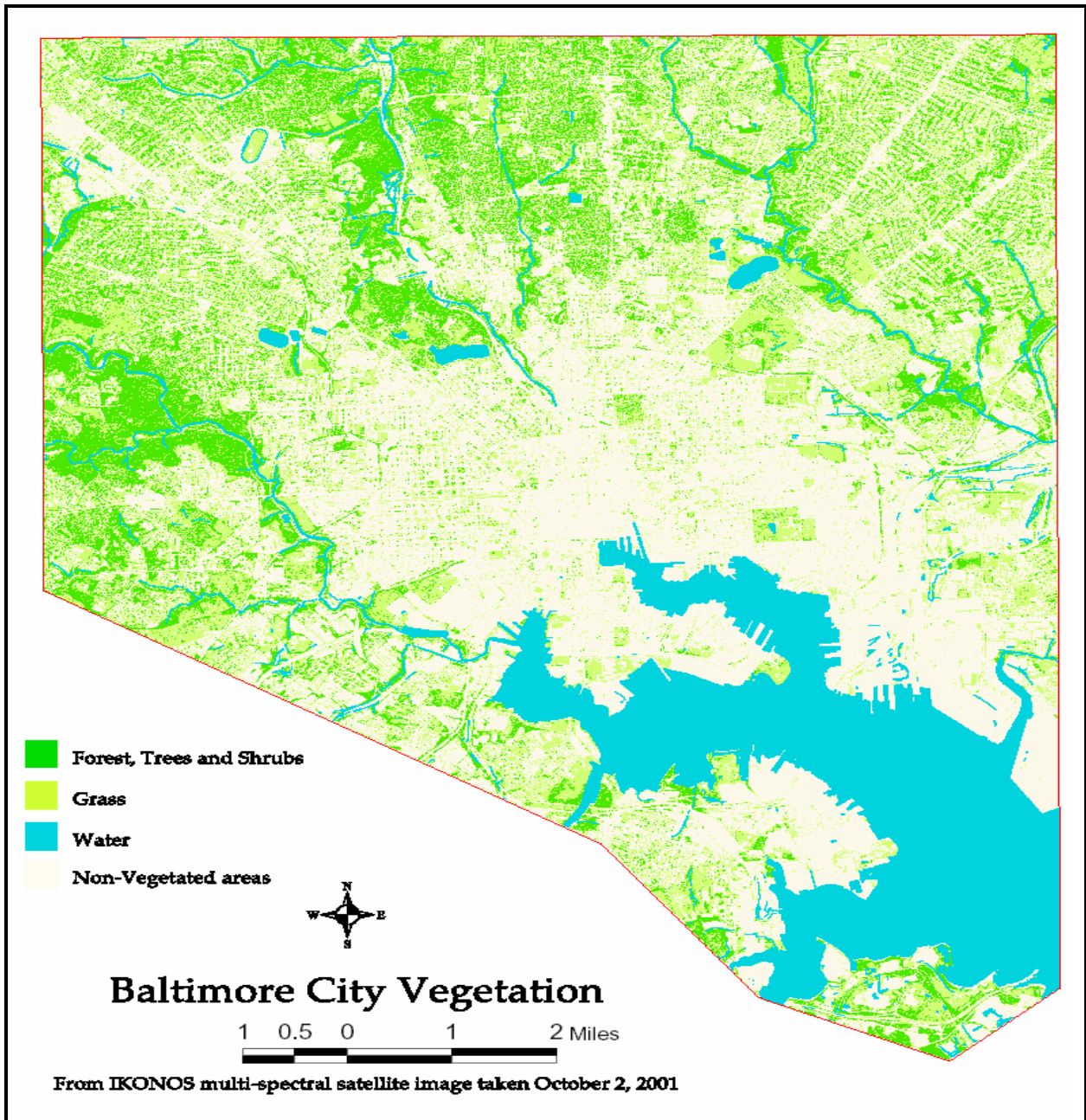
The Forest Service has applied GIS and IKONOS imagery in urban forestry projects through its Urban and Community Forestry Program. It has worked with some local governments such as the City of Baltimore to identify the location of vegetation and help make future urban forestry plans.

Image below:

Source: Maryland Department of Natural Resources

Contact: Michael Galvin

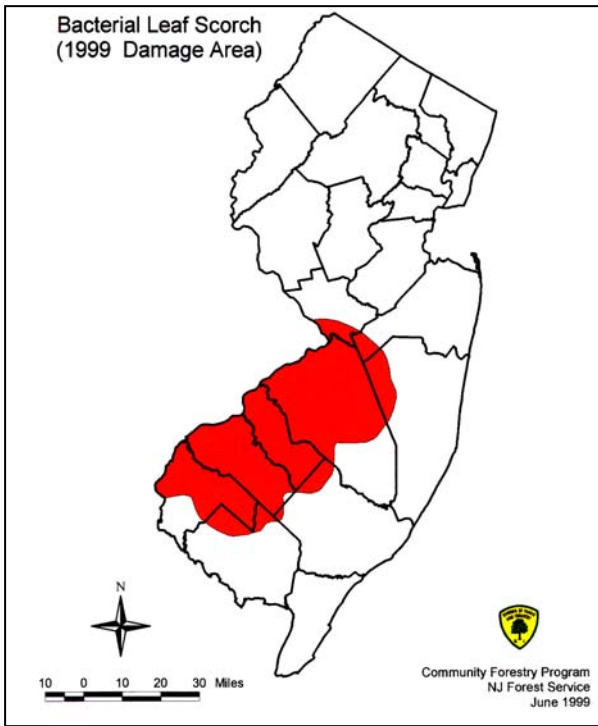
410-260-8507, [mgalvin@dnr.state.md.us](mailto:mgalvin@dnr.state.md.us)



*New Jersey*

The New Jersey Division of Parks and Forestry uses GIS and GPS for the Bacterial Leaf Scorch (BLS) research project and the Community Forestry Assessment (CFM) project. The BLS project incorporated a statewide aerial and ground survey, including over 1300 samples to assess the extent and severity of the disease and impacts on woodlots. The CFM project is an on going health assessment of New Jersey's urban forests, which started in 1994. Many exotic pests and

invasive plants originate or thrive in the tough environmental conditions of urban centers. Progress can be made through labor-intensive control measures to remove vectors of tree diseases and insect pests, as well as invasive exotic plants.



Source: USFS Bacterial Scorch Leaf web site linked to New Jersey Division of Parks and Forestry website.  
<http://www.fs.fed.us/na/morgantown/fhp/palerts/leaf/leaf.htm>